



FROM RESIDUAL TO RESOURCE

RHM – a group picture



CONTENTS

Welcome to RHM	04
The company. A success story	07
The company. Ambition and outlook	08
Management	12
Divisions. Trading and reconditioning	14
Divisions. Logistics and disposal	16
Subsidiaries and holdings	19
RHM Group organigram	20
Wilhelm Bötzel GmbH & Co. KG	23
Alfred Mandel GmbH	24
REBO Metallaufbereitungs- und Entsorgungs-GmbH	26
HKM Rohstoffhandel GmbH	29
DRT Deutsche Rohstofftechnik GmbH	30
Certifications and environmental protection	32
Sites and contacts	35

ALLOW US, RHM – THE RESOURCE TRADERS

Steel turns into scrap turns into steel – from an ecological perspective steel is one of the most environmentally friendly materials there is, because it is one hundred per cent recyclable. RHM Group provides the expertise and the requisite infrastructure to sustain this cycle.

Determined, healthy growth has made RHM Group what it is today: one of the largest resource suppliers with warehouses across the entire Ruhr region and flexible, nationwide facilities.

Global markets demand flexibility, innovation and clear structures from a successful company. No problem! RHM Group is a reliable and competent partner, reacting quickly to supplier, collection point and customer demands in the steel-making and foundry industries. For you this means: the competence and expertise of many minds at a single point of contact.

The maxim of RHM Group is as simple as it is successful: we are the perfect partner in terms of procurement, reconditioning and trading in steel and non-ferrous scrap.

Enjoy reading!





THE COMPANY. A SUCCESS STORY

1992

RHM is established as a medium-sized company with a trading office in Cologne and a facility in Mülheim an der Ruhr, Germany. A year later the entire company moves to Mülheim an der Ruhr.

1994

RHS Rohstoff Handel GmbH Stuttgart is established, specialising in non-ferrous scrap. In 2005 the company is sold in the course of a management buy-out.

1998

RHM enters into cooperation with Wilhelm Bötzel GmbH & Co. KG in Witten.

2002

Together with two additional large warehouse and reconditioning sites in Witten and Herne RHM Group acquires important transport logistics as part of the take-over of Wilhelm Bötzel GmbH & Co. KG. REBO Metallaufbereitungs- und Entsorgungs-GmbH enters the group together with Wilhelm Bötzel GmbH & Co. KG, reinforcing the market presence. Abring Metalle GmbH in Herne is taken over in the same year.

2003

RHM and the Hüttenwerke Krupp Mannesmann GmbH jointly establish HKM Rohstoffhandel GmbH. The new company deals exclusively in scrap procurement for the steelworks.

2004

RHM Group majority holding in Alfred Mandel GmbH in Gelsenkirchen.

2008

RHM takes over Alfred Mandel GmbH in Gelsenkirchen.

2009

DRT Deutsche Rohstofftechnik GmbH established. DRT develops new methods and processes for increasing resource efficiency.

THE COMPANY. AMBITION AND OUTLOOK

Ambition: to only be satisfied when you are.

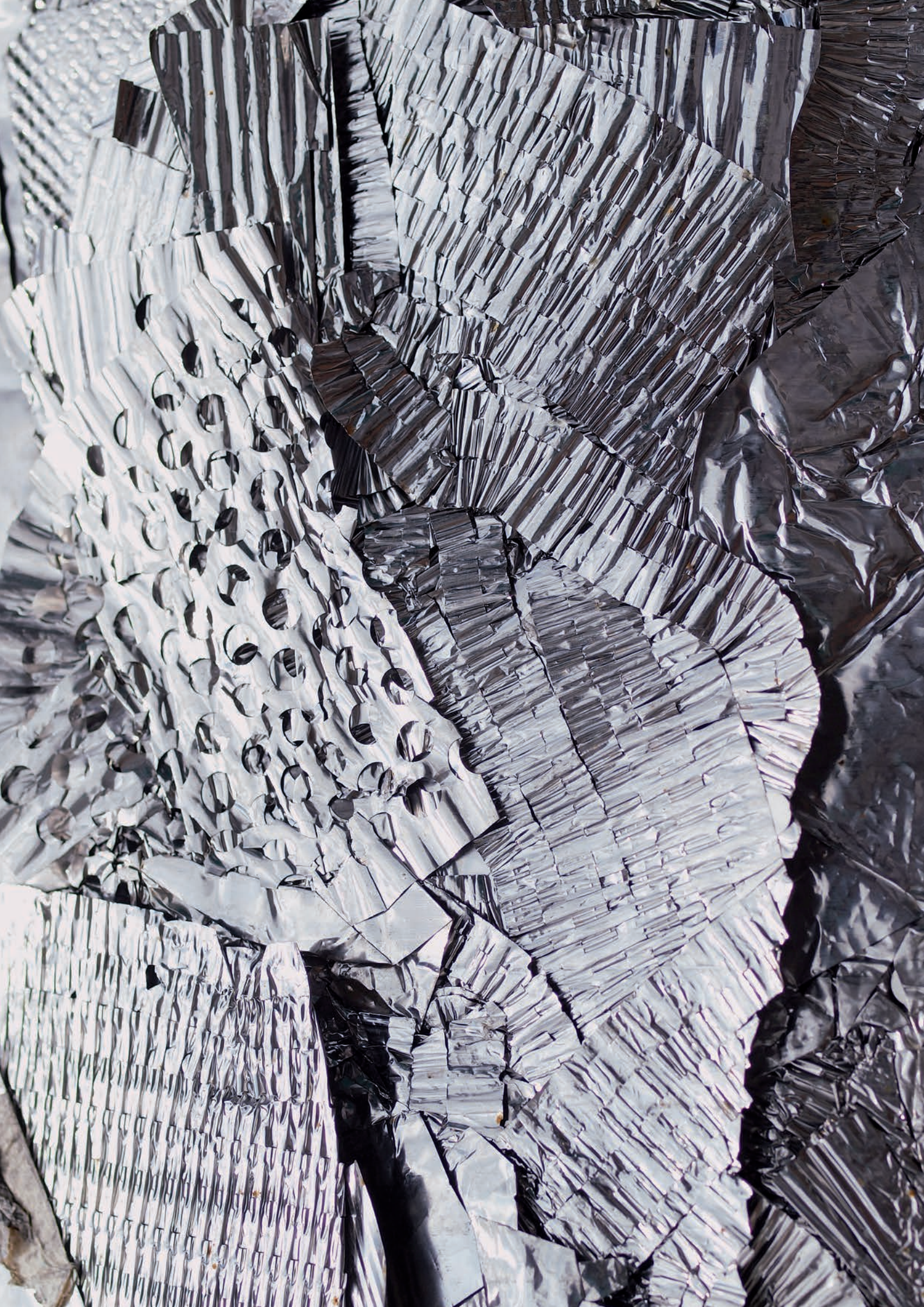
Nature's cycle is a perfect and complete system: that which has been consumed is recreated – in a constant rhythm.

RHM Group has elevated this holistic approach to a corporate ambition: individual skills alone will not convince our customers, only the totality of our services. An ambition that we put into practice daily – through expertise, sophisticated logistics, careful material reconditioning and total disposal, all in one place.

To top all this off, we retain our ability to make flexible and problem-oriented decisions. As a medium-sized company we are the perfect size to rise up and meet any supplier or customer demands.







THE COMPANY. AMBITION AND OUTLOOK

Outlook: optimise the good and test the new.

The holistic approach adopted by RHM Group was a crucial factor in the Hüttenwerke Krupp Mannesmann (HKM) decision to establish a joint scrap sourcing company. While, thanks to our expertise, and our warehouse and logistics capabilities, HKM was able to more fully reap the market, RHM Group profited from synergy effects.

This encouraged us to continue on our path as a broad-base supplier of raw materials and more.

The best example: the establishment of DRT Deutsche Rohstofftechnik GmbH. Following the dictum „From residual to recoverable – new methods and processes for increasing resource efficiency“, DRT analyses and evaluates the use of secondary metals in an alliance of value-enhancing partners. In addition to this DRT develops integrated process and information technology solutions for the future-proof utilisation of the resources raw materials, energy and time.



WHEN TWO PARTNERS GET ALONG, THE CUSTOMER IS THE HAPPY THIRD

Behind every successful company there is a strong management team: professionals, who quickly identify customer wishes and are constantly working to develop and provide innovative solutions.

Wilhelm Bötzel's and Udo Meynerts' market savvy and expertise guaranteed a successful start even in their early independent years. Selective acquisitions and holdings strengthened the corporate foundations and expanded their supply and services catalogue.

People stand at the pinnacle of RHM Group's holistic values model: as customers, employees, suppliers, and thus as an integral part of our environment. This is the best approach for responsible and sustainable corporate action.

The RHM Group's objective is to secure scrap availability at the base. Scrap and non-ferrous metals trading, and their demand-oriented reconditioning, are at the hub of all actions.

The customer is always at the heart of any activity.







TRADING AND RECONDITIONING. THE FOUNDATION OF ALL ACTIVITIES

Trading: is always based on fair partnerships.

When a residual becomes a resource, demand increases. RHM Group therefore identified scrap trading as the essential corporate nucleus. The foundation for this trading is furnished by a broad network of collection points and traders, who we cooperate with in a fair partnership.

We primarily buy and sell scrap and non-ferrous metals, but also trade in industrial residuals originating in this sphere of activity. Important collection points include facilities where new scrap accumulates during the production process. These include heavy plate cutting companies, and machining and processing companies, for example the automotive industry, cold rolling mills or machine factories. We also trade in additional raw materials such as trader and consumer scrap – for example from recycling centres or demolition companies.

Reconditioning: the route from scrap to valuable crude steel.

Steel is unique. Not only can it be endlessly recycled, it can also be reused ad infinitum to manufacture top-quality products. From scrap we get crude steel again – without laying claim to valuable natural resources.

However, reconditioning always precedes recycling. RHM Group has established the prerequisites for collecting steel scrap and non-ferrous metals – for example at Alfred Mandel GmbH and sorting and processing them to the customer's quality criteria. With the aid of modern machines – including large hydraulic shears, rotary mills, cross-flow shredders, baling presses and briquetting machines – we are capable of reducing, compressing, sorting and batching the delivered scrap.

The focus of our widespread warehouse network is in North Rhine-Westphalia. This gives us the best possible proximity to the collection points. Our warehouse concept allows us to accept all collection point and trader scrap and to service our client's needs flexibly and on time.



THE DIVISIONS. LOGISTICS AND DISPOSAL

Logistics: more than just getting from A to B.

Mobility facilitates logistics – and through flexibility retains an environmentally friendly character. Logistics is therefore more than just on-schedule transport from A to B: it is the underpinning for ecologically meaningful and value-added recycling.

Perfect logistics is a strong quality characteristic for a business based on widespread collection points as it is operated by the RHM Group. We see ourselves as a logistics partner, the correct solution for the wishes and requirements of the supplier always ready at hand – including the correct vehicle for the job.

The Wilhelm Bötzel GmbH & Co. KG HGV fleet holds vehicles presenting a variety of transportation systems. They allow us to guarantee punctual and reliable disposal from the collection points at any time. We can provide multibucket and roll-off trailers, articulated or crane vehicles for loading scrap on-site.

The same applies to suppliers: we continuously dispose of scrap at the collection points by regularly replacing full containers. The excellent traffic links to the road, rail and waterways networks enjoyed by our warehouses optimise RHM Group's transport options.



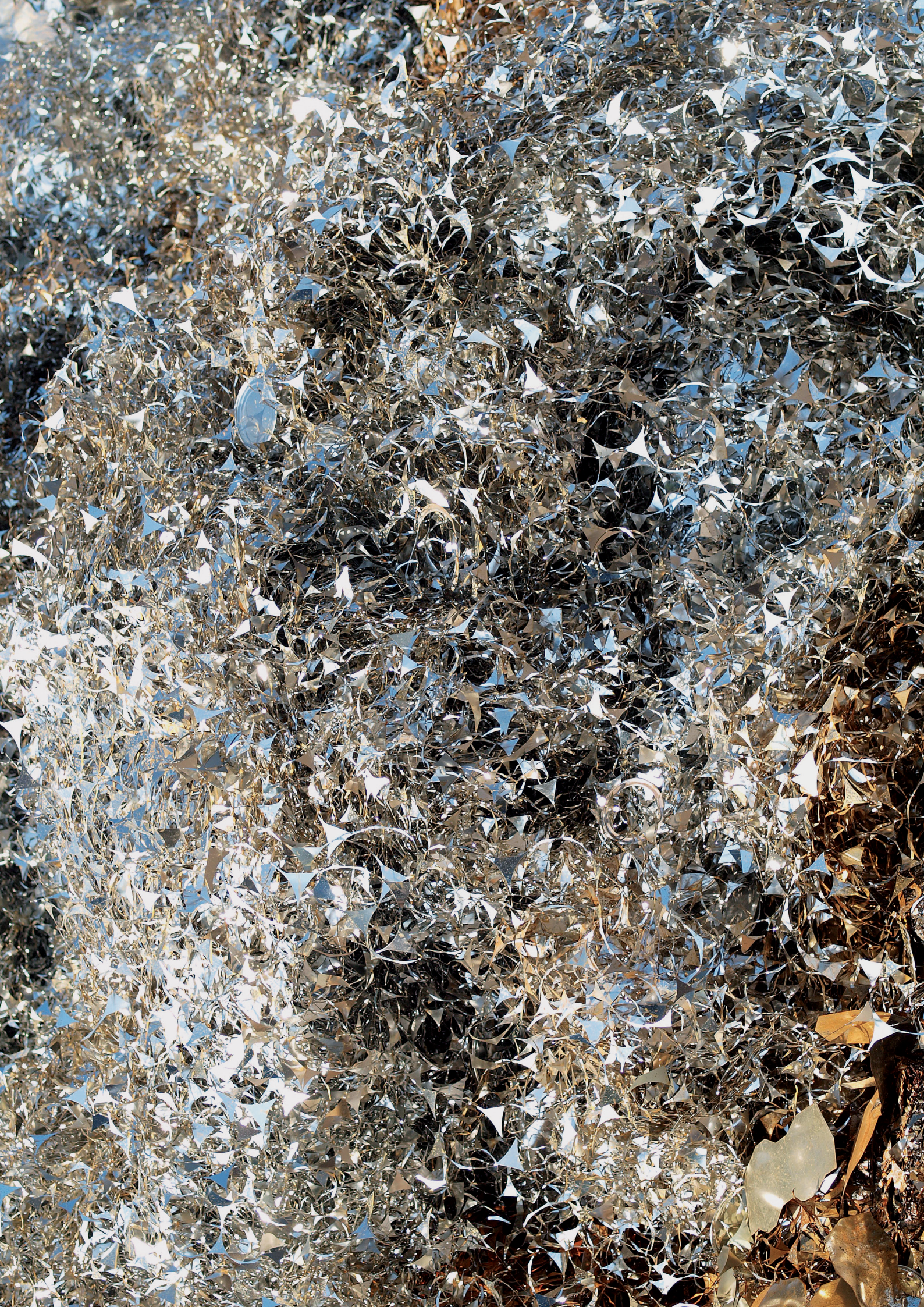


Disposal: practical environmental protection, day in, day out.

Recovery into the production loop and reuse of exhausted steel after reconditioning represents practical environmental protection – which is even more comprehensive when other metal and non-metal resources are incorporated.

With its subsidiary REBO Metallaufbereitungs- und Entsorgungs-GmbH, RHM Group is in the unique position of being able to provide a broad overall package: one-stop disposal and recycling. As a certified waste management company we of course comply with all the regulations of the Closed Substance Cycle Waste Management Act.

The sum of these individual aspects help RHM Group to stand apart from its numerous competitors. Reason enough to continue to expand this service – but also to round-off our portfolio in terms of environmental protection.



FIT TO BE SEEN: RHM GROUP SUBSIDIARIES AND HOLDINGS

Wilhelm Bötzel GmbH & Co. KG, Witten-Herbede

Focal point: logistics, scrap trading and reconditioning

Alfred Mandel GmbH, Gelsenkirchen

Focal point: scrap trading and reconditioning

REBO Metallaufbereitungs- und Entsorgungs-GmbH, Herne

Focal point: scrap trading, disposal and recycling

HKM Rohstoffhandel GmbH, Duisburg-Huckingen

Focal point: steel scrap sourcing company

DRT Deutsche Rohstofftechnik GmbH, Mülheim an der Ruhr

Focal point: development of processing technology solutions



THE RHM GROUP ORGANIGRAM - EXPERTISE AND SERVICE AT A GLANCE







WILHELM BÖTZEL GMBH & CO. KG

Wilhelm Bötzel GmbH & Co. KG collects, recycles and markets all types of metal scrap from industry, demolition and residual waste collecting. W. Bötzel disposes of steel and metal scrap of all kinds from collection points and building sites using their own logistics, and provides our domestic and international partners in the steel and metal producing industries with materials. As an integrated services provider W. Bötzel is our partner for complex internal and external logistics and reconditioning tasks for anything relating to scrap.

W. Bötzel owns a superior fleet of more than 30 vehicle units, which are also available to the RHM Group. They include multibuckets and roll-off multibuckets, articulated and mobile crane vehicles – for both scrap disposal from the collection points and scrap deliveries to steelworks and foundries. They hold 3,500 multibuckets and roll-off multibuckets, available for our customers, with total loading volumes between 5 and 40 cubic metres.

Wilhelm Bötzel GmbH & Co. KG
Wittener Straße 170-176, 58456 Witten
Tel.: +49 (0)2324 31112, Fax: +49 (0)2324 30113





ALFRED MANDEL GMBH

Alfred Mandel GmbH is a certified waste management company. As a part of RHM Group they process, sort and recondition scrap, metals and crude products of all kinds. An additional focus: container service and port handling.

Container volumes between 1 and 36 cubic metres are available for disposal and collection of secondary resources. The company fleet guarantees smooth job handling in line with operational requirements. Ferrous and non-ferrous scrap are taken for final sorting and reconditioning to a modern, well-equipped warehouse near the Rhein-Herne canal in Gelsenkirchen. Utilisation of optimal logistics links to road, rail and water networks ensures that we can always take advantage of the most economical transport route.

The depth of sorting and efficient reconditioning of the prized steel raw materials makes Alfred Mandel GmbH the perfect partner for our domestic and international customers.

Alfred Mandel GmbH

Uferstraße 37-39, 45881 Gelsenkirchen

Tel.: +49 (0)209 94141-0, Fax: +49 (0)209 94141-41



REBO METALLAUFBEREITUNGS- UND ENTSORGUNGS-GMBH

REBO Metallaufbereitungs- und Entsorgungs-GmbH is nationally operating company in the steel and metals recycling industry. Branches in Herne, Lübeck and Leipzig, as well as holdings in Münster, Munich and Göppingen provide REBO with a wide variety of options for optimal recycling and marketing of homogeneous quality products and so-called problem scrap.

REBO commands a large number of options for generating clean scrap grades for reconditioning within RHM Group. REBO buys non-ferrous scrap metals such as copper, brass, aluminium, lead or zinc, on the stock markets at the current price, ranging from small lots to large consignments.

Thanks to its sorting plant in Herne REBO is one of the most prominent players on the international non-ferrous metals market.

REBO Metallaufbereitungs- und Entsorgungs-GmbH
Hafenstraße 2a, 44653 Herne
Tel.: +49 (0)2325 6369-43, Fax: +49 (0)2325 6369-48







HKM ROHSTOFFHANDEL GMBH

The Hüttenwerke Krupp Mannesmann GmbH (HKM) are one of the leading steel producers in Europe. They provide feedstock such as slab ingots and round continuous cast products to shareholders Thyssen Krupp Steel Europe AG, Salzgitter Mannesmann GmbH and Vallourec & Mannesmann Tubes S.A., who use them to manufacture a wide range of steel products in their downstream operations.

Any scrap reconditioning required is carried out at RHM Group sites. RHM Group takes delivery of unsuitable scrap from HKM, recycles it and in return provides material perfectly suited for use in steelworks.

HKM Rohstoffhandel GmbH, together with the RHM Group, guarantee continuous availability and quality of the necessary resource base at market-driven conditions.

HKM Rohstoffhandel GmbH
Ehinger Straße 200, 47259 Duisburg-Huckingen
Tel.: +49 (0)203 999-4192, Fax: +49 (0)203 999-4190



DRT DEUTSCHE ROHSTOFFTECHNIK GMBH

DRT analyses and evaluates the use of industrial metals in an alliance of value-enhancing partners and develops integrated process and information technology solutions for the future-proof utilisation of the resources raw materials, energy and time.

Following a technical and economic feasibility study DRT designs processes and installations for sustainable resource and energy utilisation, and licences the requisite development or market participation.

Implementation to process maturity is achieved by means of a development alliance, created and coordinated by DRT, consisting of metalworking companies, technology partners and universities. Because of the considerable risks involved, especially in the market launch phase, DRT initiates public project funding at both the federal and the state level.

DRT Deutsche Rohstofftechnik GmbH
Rheinstraße 141, 45478 Mülheim an der Ruhr
Tel.: +49 (0)208 99924-0, Fax: +49 (0)208 99924-15





ENVIRONMENTAL PROTECTION AND CERTIFICATIONS

RHM Group view economy and ecology as equal partners. We comply with all relevant environmental regulations and are naturally in possession of the appropriate certifications. Because it is people that are any company's critical resource, we trust in motivated, decisive and competent employees – and in the dictum that the customer is at the heart of any activity.

In order to live up to our customer's ever-increasing demands in terms of quality, environmental protection, and health and safety issues, RHM Group has adopted high quality standards in its corporate activities. To achieve the objectives we have set ourselves we are committed to engaging all employees in our philosophy of optimising quality, service and safety.

Our certifications:

EN ISO 9001:2000

Audited company with quality assurance system complying with European standards.

Waste management company

Comply with waste management company regulations in the Closed Substance Cycle Waste Management Act.

EMAS registration certificate

Entry in the register of companies who have introduced an environmental management system to EU standard 761/2000. This EU standard incorporates the DIN 14000 standard.





WE FIND YOU SHOULD BE ABLE TO FIND US

RHM Rohstoff-Handelsgesellschaft mbH

Rheinstraße 141, 45478 Mülheim an der Ruhr

Tel.: +49 (0)208 99924-0, Fax: +49 (0)208 99924-15

Wilhelm Bötzel GmbH & Co. KG

Wittener Straße 170-176, 58456 Witten

Tel.: +49 (0)2324 31112, Fax: +49 (0)2324 30113

Alfred Mandel GmbH

Uferstraße 37-39, 45881 Gelsenkirchen

Tel.: +49 (0)209 94141-0, Fax: +49 (0)209 94141-41

REBO Metallaufbereitungs- und Entsorgungs-GmbH

Hafenstraße 2a, 44653 Herne

Tel.: +49 (0)2325 6369-43, Fax: +49 (0)2325 6369-48

HKM Rohstoffhandel GmbH

Ehinger Straße 200, 47259 Duisburg-Huckingen

Tel.: +49 (0)203 999-4192, Fax: +49 (0)203 999-41 90

DRT Deutsche Rohstofftechnik GmbH

Rheinstraße 141, 45478 Mülheim an der Ruhr

Tel.: +49 (0)208 99924-0, Fax: +49 (0)208 99924-15

RHM Rohstoff-Handelsgesellschaft mbH
Rheinstraße 141
45478 Mülheim an der Ruhr

Tel.: +49 (0)208 99924-0
Fax: +49 (0)208 99924-15

info@rhm-rohstoffe.de
www.rhm-rohstoffe.de

